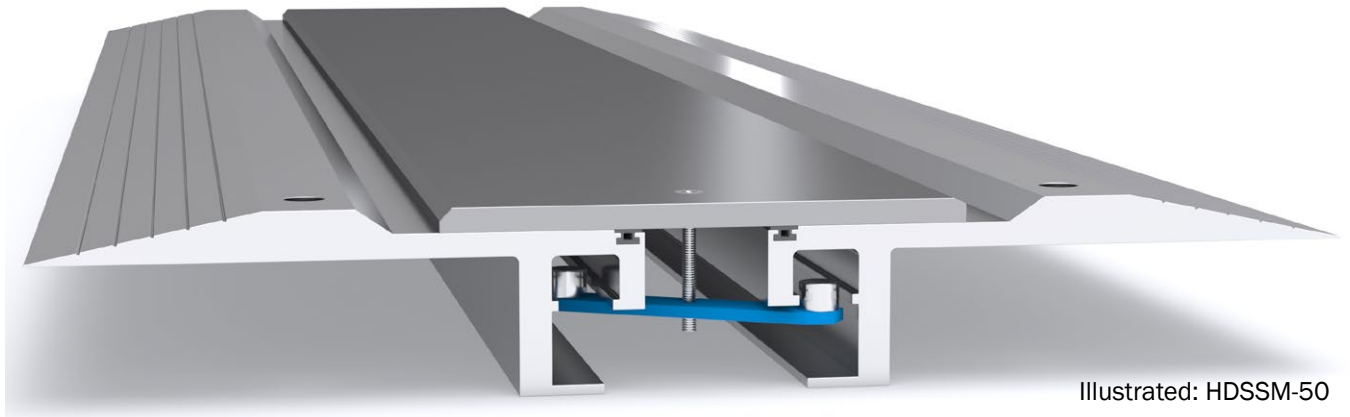
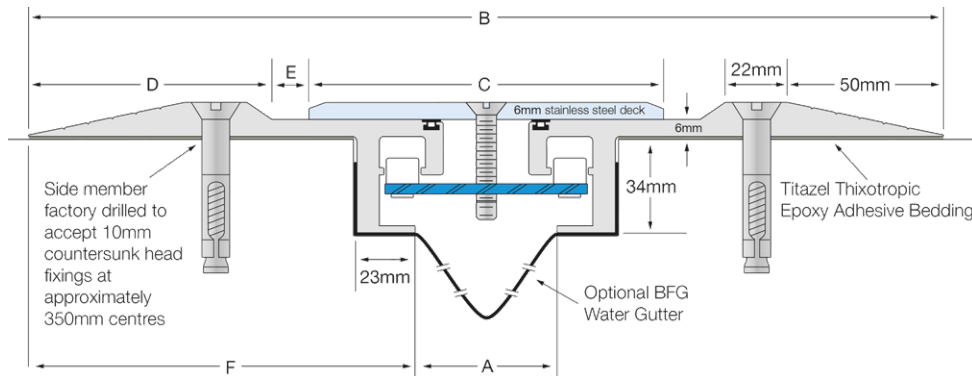


Latham Heavy Duty Series Aluminium Expansion Joint Cover with Stainless Steel Cover Plate HDSSM



Illustrated: HDSSM-50



Stainless Steel Code	A	B	C	D	E	F	Movement	Total Available Movement	Overall Depth	Cover Plate Thickness
HDSSM-50 Vehicular	50	318	128	81	14	110	+/-25mm	50mm	46mm	6mm
HDSSM-75 Vehicular	75	343	153	81	14	110	+/-25mm	50mm	46mm	6mm

FEATURES

- Aluminium surface mounted floor expansion joint cover with a stainless steel cover plate.
- Designed for domestic and light commercial vehicular traffic and heavy pedestrian traffic.
- Joint can withstand impact and vibration generated by vehicular traffic travelling at speeds up to 20 kph.
- Installed surface mounted on top of a slab, in conjunction with mechanical fixings.

MATERIALS

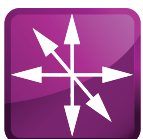
- Aluminium 6063-T5 mill finish alloy.
- 304 Grade, 2B finish stainless steel cover plates.
- Spring steel treated centering bar with elongated spherical rods (at ~475mm centres).
- Supplied in 3050mm lengths.

FIXINGS

- Side members pre-drilled at ~350mm centres to accept countersunk head 10mm fixings.
- We recommend Latham Thixotropic Epoxy Adhesive be used in conjunction for superior securing.

FURTHER TECHNICAL SPECIFICATIONS

- [Website Link - PDF and DWG Details](#)
- [Product Information](#)
- [Joint Specifications](#)
- [Fire Rated Systems](#)
- [Full Product Catalogue](#)
- [Architectural Specifications](#)
- [Warranty](#)



multi directional
6-way movement



indoor & out-
door use



BFG water
gutter



fire rated (joint
widths >50mm)



vehicular