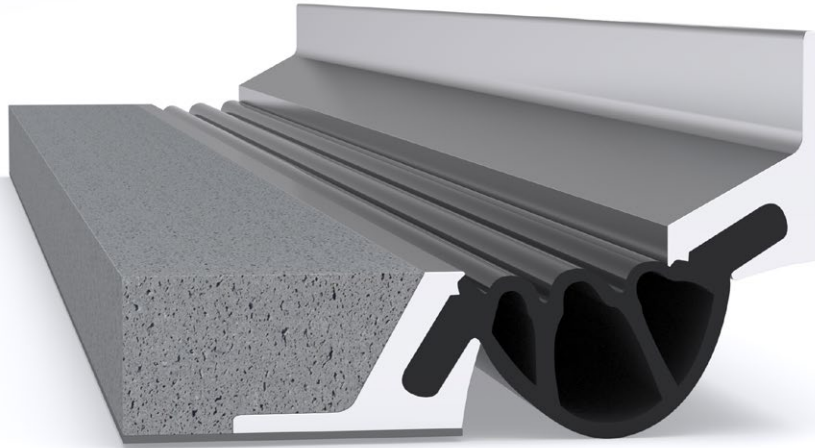
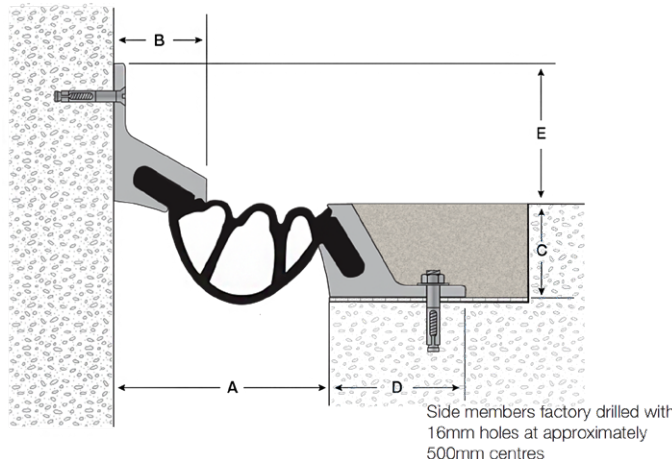


Latham Car Joint Series Aluminium Expansion Joint Cover USETM-50FW



Illustrated: USETM-50FW



Aluminium Code	A	B	C	D	E	Movement	Total Available Movement	Overall Depth
USETM-50FW	75	38	38	50	70	+/-20mm	40mm	108mm

FEATURES

- Aluminium and neoprene floor-to-wall expansion joint cover.
- The Latham Elastomeric Parking Seal provides an attractive expansion joint solution for parking stations and roof top parking structures.
- The neoprene seal creates a virtually water proof seal when correctly installed.
- The flush finish and elimination of the cover plate ensure quiet transition of vehicles.

- Neoprene can be supplied in lengths up to 50m to reduce on-site joining of the seal.

FIXINGS

- Side member pre-drilled 16mm holes at ~500mm centres.

FURTHER TECHNICAL SPECIFICATIONS

- [Website Link - PDF and DWG Details](#)
- [Product Information](#)
- [Joint Specifications](#)
- [Fire Rated Systems](#)
- [Full Product Catalogue](#)
- [Architectural Specifications](#)
- [Warranty](#)

MATERIALS

- Aluminium 6063-T5 mill finish alloy.
- One-way, non-removable neoprene seal.
- Supplied in 3050mm lengths.



multi directional
6-way movement



indoor & out-
door use



vehicular